

# UC SYSTEMWIDE GRADUATE STUDENTS' BASIC NEEDS DURING COVID-19 SURVEY

INFOGRAPHIC REPORT: COVID-19 EFFECTS ON ACADEMIC LIFE



## SURVEY METHODS

During the summer of 2020, an online survey was administered to graduate students who had received Basic Needs services at seven University of California campuses. Respondents reported COVID-19 exposures and infections, COVID-19 impacts on work, basic needs (food and housing) and academics, and campus Basic Needs service utilization. The following infographics pertain to COVID-19 impacts on graduate students' academic lives.

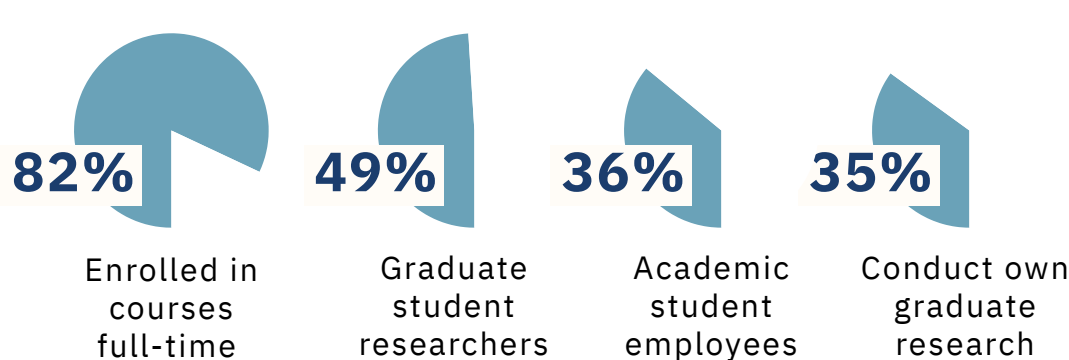


## RESPONSES PER CAMPUS

UC San Diego	219	28%
UC Los Angeles	136	17%
UC Riverside	130	16%
UC Irvine	105	13%
UC Berkeley	101	13%
UC San Francisco	51	6%
UC Davis	49	6%
<b>Total</b>	<b>791</b>	<b>100%</b>



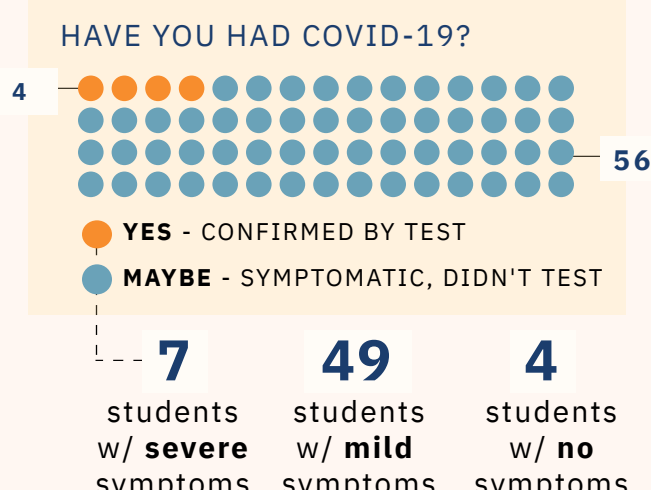
## SAMPLE



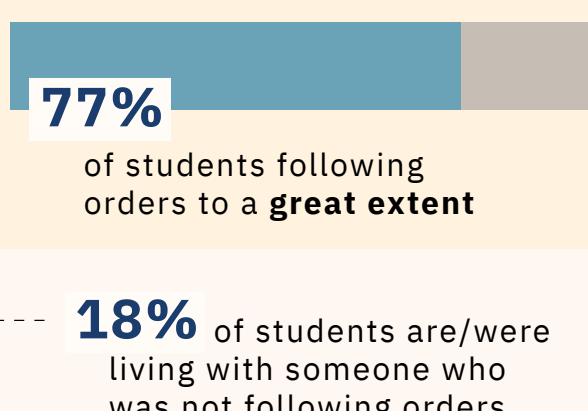
UNIVERSITY OF CALIFORNIA

## RESULTS

### COVID-19 EXPOSURE

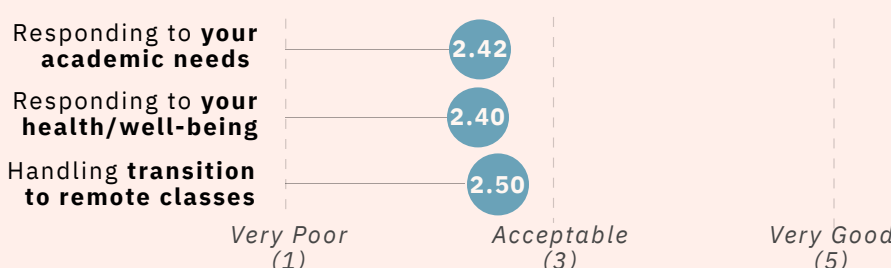


### SHELTER-IN-PLACE/SOCIAL DISTANCING



### INSTITUTIONAL SUPPORT: RESPONDING TO COVID-19

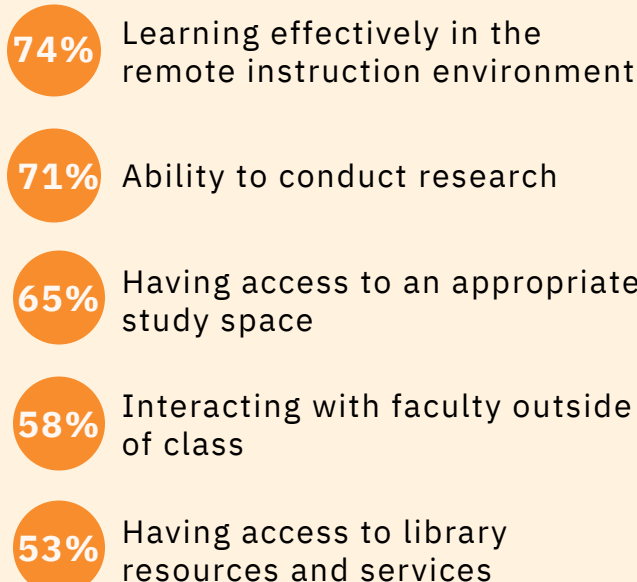
In general, how would you rate your UC campus (i.e., admin. & faculty) on these factors, during COVID-19-----



### STUDENT CONCERNS: EFFECTS OF COVID-19



#### TOP 5: LEARNING

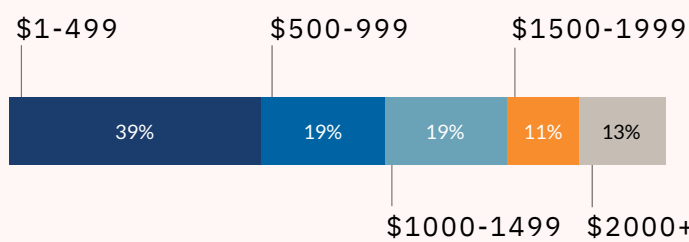


#### TOP 4: GENERAL

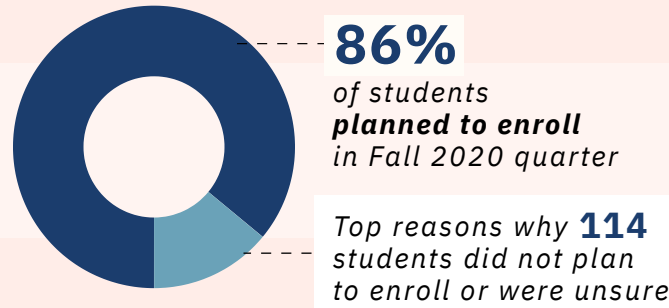
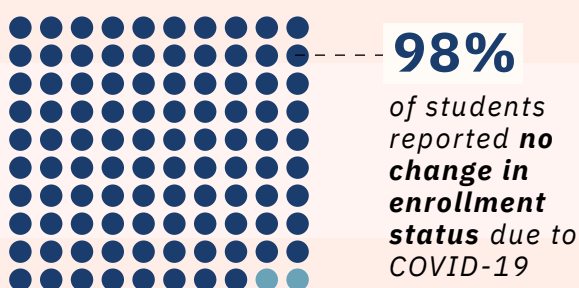


[% based on "concerned" & "very concerned" responses]

### REMOTE LEARNING EXPENSES



### ENROLLMENT STATUS



61% Plan to graduate by Fall 2020



14% Financial challenges



9% Have concluded coursework

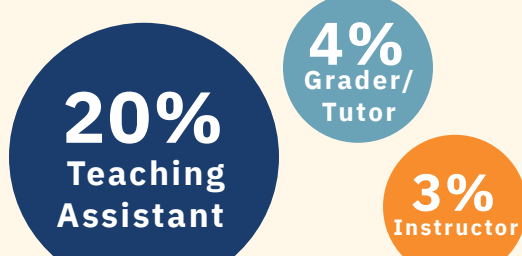


8% Health concerns

### EFFECTS OF COVID-19 ON ACADEMICS

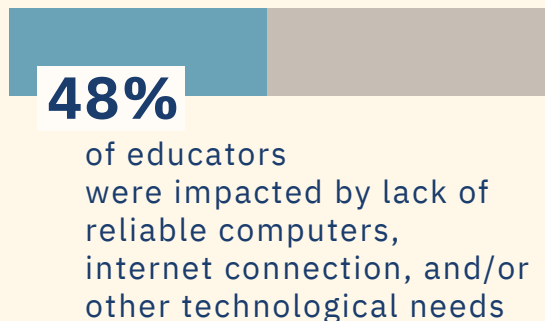


Which best reflect **your position(s) as an educator**, during the last academic term?



[567 students did not identify as educators.]

### IMPACT ON ONLINE TEACHING ABILITIES



Due to COVID-19, of the **462** students who reported conducting research...



Contacts: Suzanna Martinez, PhD, [Suzanna.Martinez@ucsf.edu](mailto:Suzanna.Martinez@ucsf.edu) & Sevan Kalaydjian, MA, [skalaydj@uci.edu](mailto:skalaydj@uci.edu)